

Features:

- Bidirectional communication by power line in high speed with the feedback function
- Join with any type of switches, and plug-in panel.
- Ultra-slim design. Dimension:46X46X23mm
- Easy use and quick setup. Can finish learning within 6 seconds.
- Use noise filter circuit inside
- Command ALL OFF for electronic appliances.

Technical Specification:

- Rated Voltage & Frequency: 220VAC±10%, 50Hz
- Maximum Load : ≤2200W
- Static Power <0.5W
- Operating Temperature: -10~50℃
- Response Time for bidirectional signals ≤ 2s

Set up the address:

(Notice: Please refer to the specifications of the remote firstly...)

- Reprress the key ‘Setup’ 5 seconds, the indicator light will bright continually, and then enter the learning status.
- Send the relative address code and ON/OFF order by remote(e.g. by TDXE6648 LCD Multi-Function Remote control)

Operation:

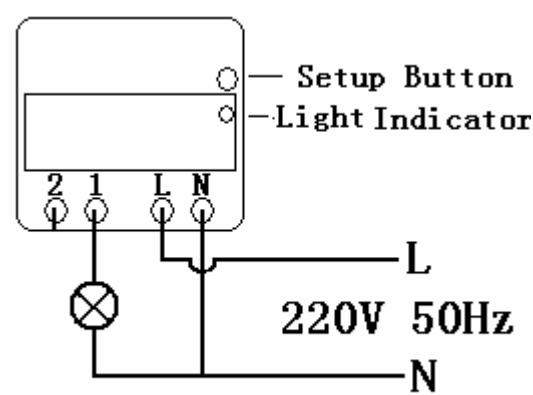
After set up the address, you can control it through the methods as bellow:

Any bidirectional or X10 controllers, such as our wireless remote, wall-switch centralized controller, telephone controller and intelligent control center etc.

Installation:

Connect and install it by the professional persons as the wiring diagram.

Avoid injury to people and products.



Illus 1

- Shut off power.
- Connection line according to label on the module.
Module's "L" connects with Live wire.
Module's "N" connects with Neutral wire.
- Load connects with '1' port.



Contact Information

Manufacturer: Taiyito Technology Co., Ltd

Add: 1505 Rm, No.18 Fenghuli Building ,Anshan West Road, Nankai District 300192 Tianjin China

Manufacture Add: Hongqiao Science and Technology Zone

Tel: 022-27415471 27611356 27421307

Fax: 022-27611356-804 Post Code: 300192

E-mail: info@taiyito.net

Net: WWW.TAIYITO.NET

No notify as any changes of the product design and specification.